



## ABOUT US

We are on a mission to make the world a better place by providing Quality Eyecare For All.

We help patients SEE clearly so they can be confident and enjoy life. By restoring sight, we help people avoid the pain and suffering of blindness.

**DID YOU KNOW?**

### SUBSIDIZED PRICING (SP) PROGRAM

Our Subsidized Pricing (SP) Program is a discount program where patients benefit from reduced prices for clinic and surgical services.



## CONTACT US

**CVRS Ltd**  
**Trinidad Eye Hospital**

PASEA | SAN FERNANDO



**1 868 235-4834**



**customerservice**  
**@trinidadeyehospital.org**



**www.trinidadeyehospital.org**



# A PATIENT'S GUIDE TO RETINA

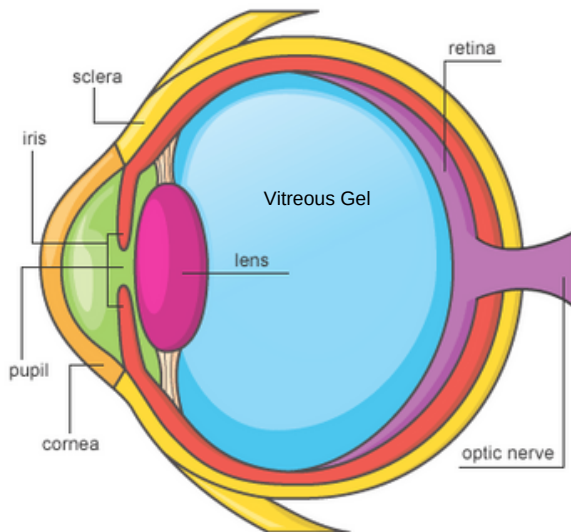


## WHAT IS THE RETINA?

The retina is a thin layer of tissue that lines the back of the eye on the inside. Its purpose is to receive light that the lens has focused, convert the light into neural signals, and send these signals on to the brain for visual recognition. Retinal problems are usually fixed with a Vitrectomy Surgery.

### SYMPTOMS OF RETINAL PROBLEMS

- Seeing floating specks
- Blurred or distorted vision (straight lines look wavy)
- Defects in the side vision
- Lost vision



## WHAT IS A VITRECTOMY?

A Vitrectomy is a type of eye surgery used to treat problems of the eye's retina and vitreous. It can be used to treat the following conditions.

- Retinal Detachment
- Vitreous Hemorrhage
- Scar Tissue on the Retina
- Tears or Holes in the Retina
- Severe eye injury

### WHAT HAPPENS DURING SURGERY?

The surgery can take from 1 to several hours depending on your specific needs. You may have a local anaesthetic to numb the eye or General Anaesthesia. During surgery, the ophthalmologist will make a small cut in the white of the eye (sclera) and will use a microscope to see inside your eye. Your ophthalmologist will perform your surgery using tiny surgical instruments.

## WHAT HAPPENS AFTER THE SURGERY?

Following the surgery, you will be monitored as you rest and recover. Your doctor will prescribe medicine to help relieve pain. You will also be given eye drops to use for up to 4 weeks.

You may have to wear a patch on your eye for a few days to protect it until your doctor clears you to resume your normal activities.

You may be advised to keep your head in a facedown (or side-facing) position for a specific period of time.

If a gas bubble is used, you cannot travel via airplane until the gas bubble is gone. This is because a rapid altitude change can affect the size of the bubble.

It is very important to follow your doctor's instructions to ensure your eye heals properly.